

Parts /Labels

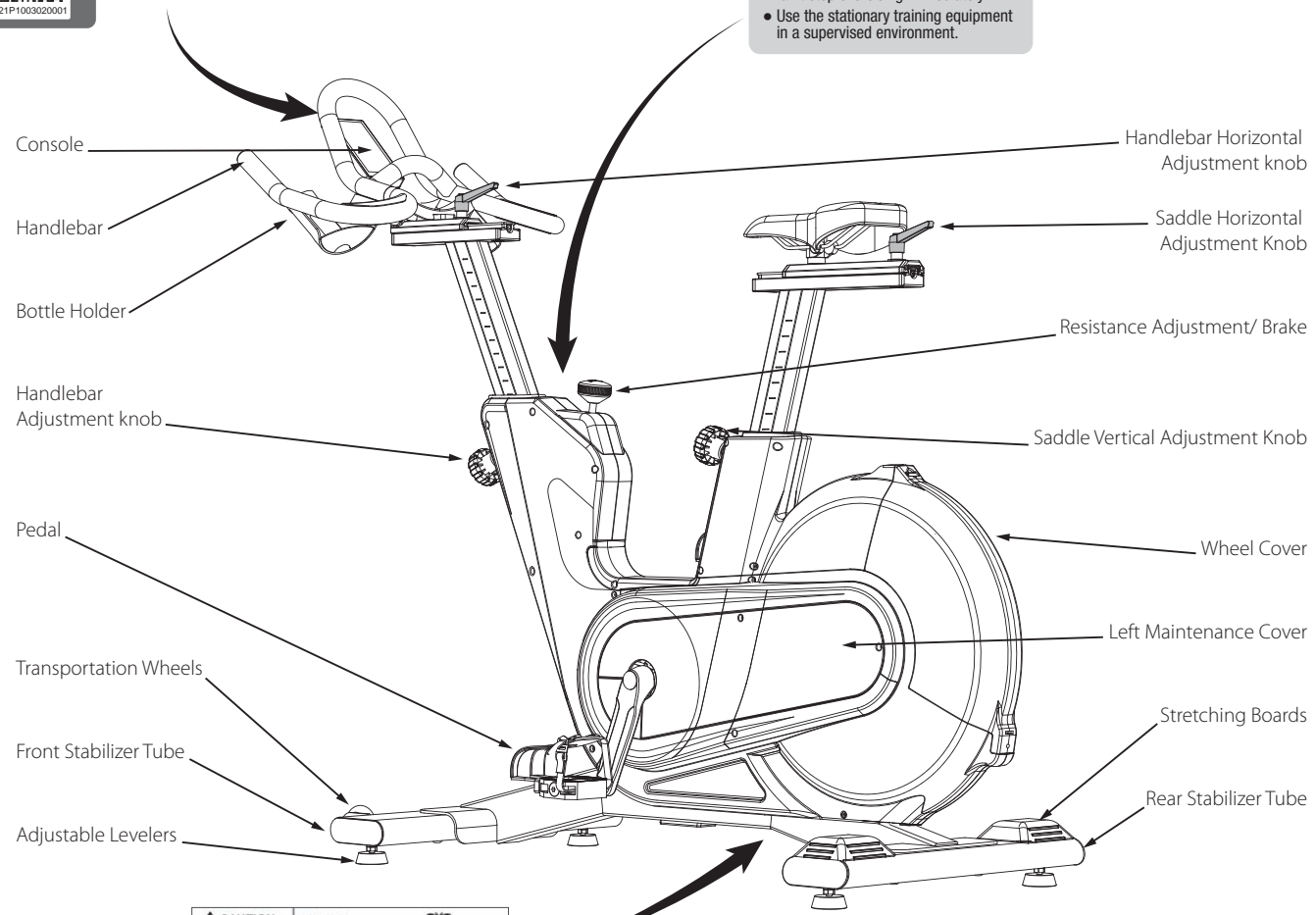


Scan the QR Code on the back of your device to:

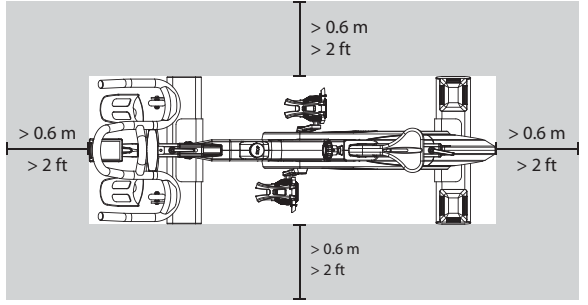
- Connect and pair with the APPs.
- Register the product.
- Download the most up-to-date operation guide.

WARNING

- Heart rate monitoring systems may be inaccurate. Over exercise may result in serious injury or death. If you feel faint stop exercising immediately.
- Use the stationary training equipment in a supervised environment.



* Please be sure to have your model name and serial number ready before calling the customer service. The model name and serial number can be found on the right side near the rear end.



Placement of the Equipment

Please place the equipment on a level ground and avoid direct sunlight. Do not place it outdoor, in the garage, open yard, humid, and/or ventilated places. For safety purpose, please keep the equipment's surrounding clear for 2 ft (0.6 Meters) on all four sides.

Limited Product Warranty

You are given only one original copy of this warranty card please preserved it properly.

- 1 If this product fails due to manufacturing reasons, we provide a 1-year manufacturer's warranty from the date of purchase/assembled. (Except for non-home users)
- 2 Please show this warranty card when requiring repair service.
- 3 If the warranty card is not stamped with the company seal (or dealer) or the contract is incomplete, it may loss the warranty rights, the following conditions are not within this limit:
 - Submit original invoice or proof of purchase.
 - Distribution document that can provide relevant proof of purchase.
- 4 Non-Warranty Repair Policy: (User needs to pay for the repairs.)
 - If malfunction or damage is caused by improper use, disassembly and modification.
 - Due to normal wear and tear of consumptive parts such as the operation panel of the console, pedal, saddle, belt, crank, brake pad, etc.

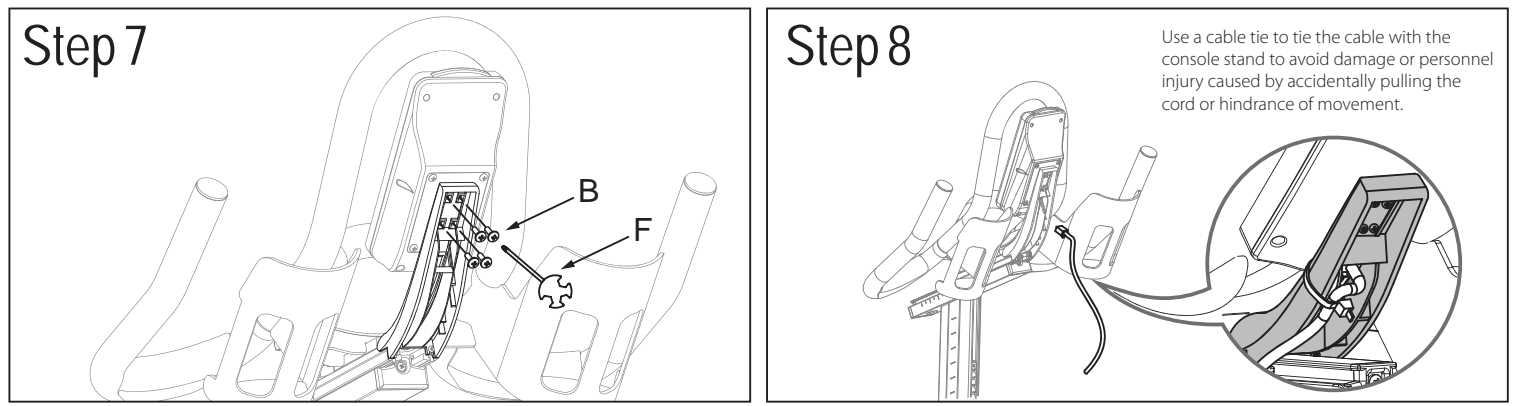
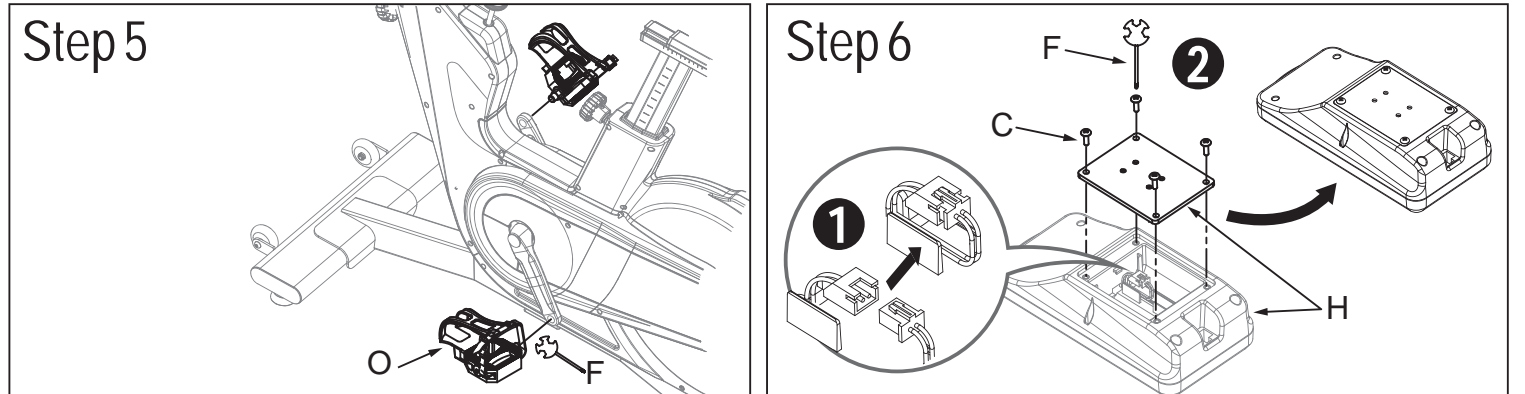
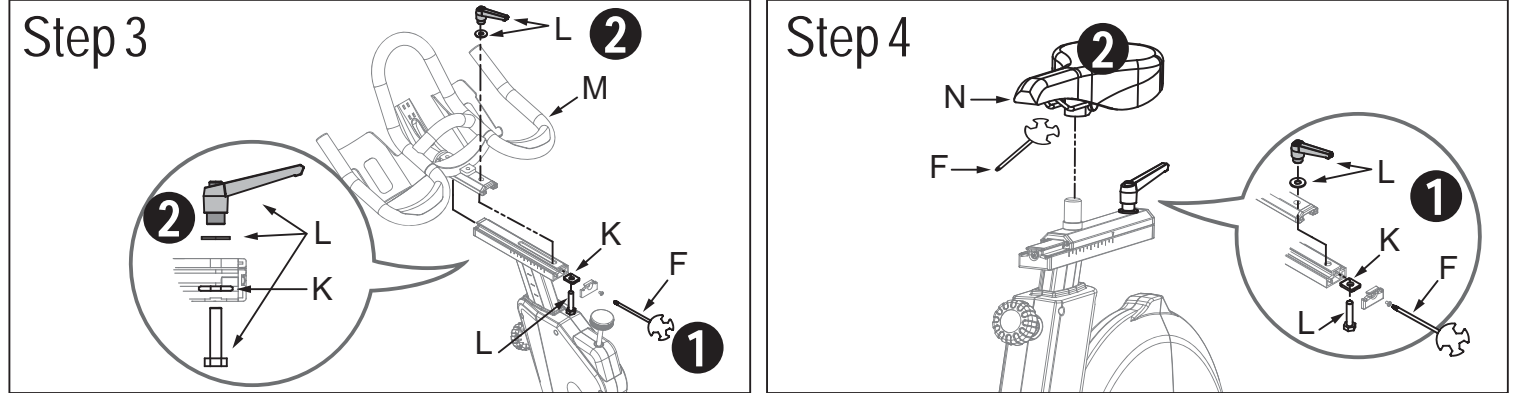
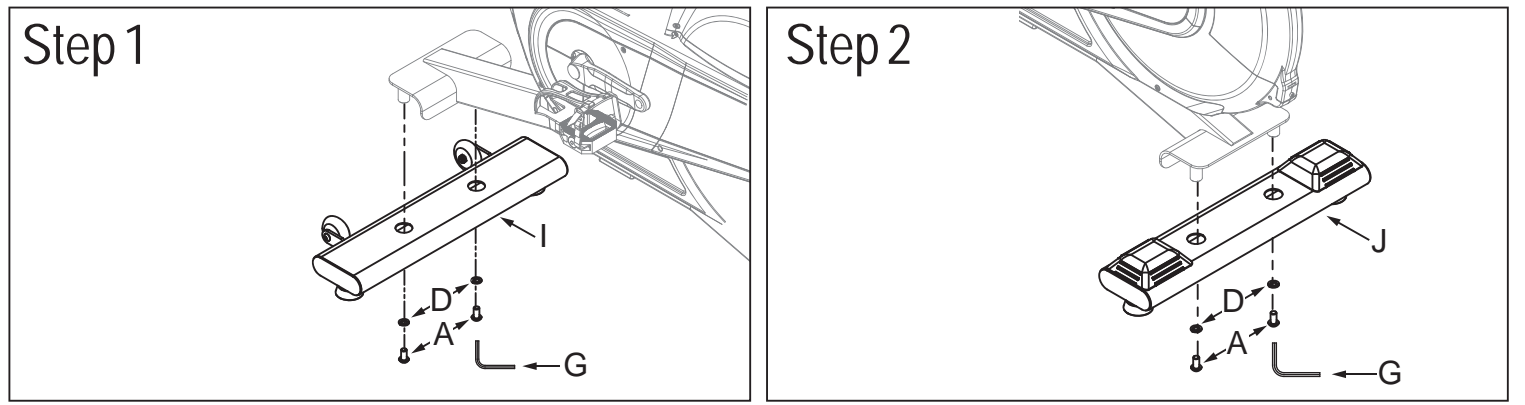
Model _____ Assembled on _____
 Serial No.* _____
 SN:

Dealer's Stamp	Customer Service
	Manufacturer Add.: No.405 Tongxin Road, Tongxiang Economic Development Zone, Zhejiang, China TEL: +86-573-8862 8666

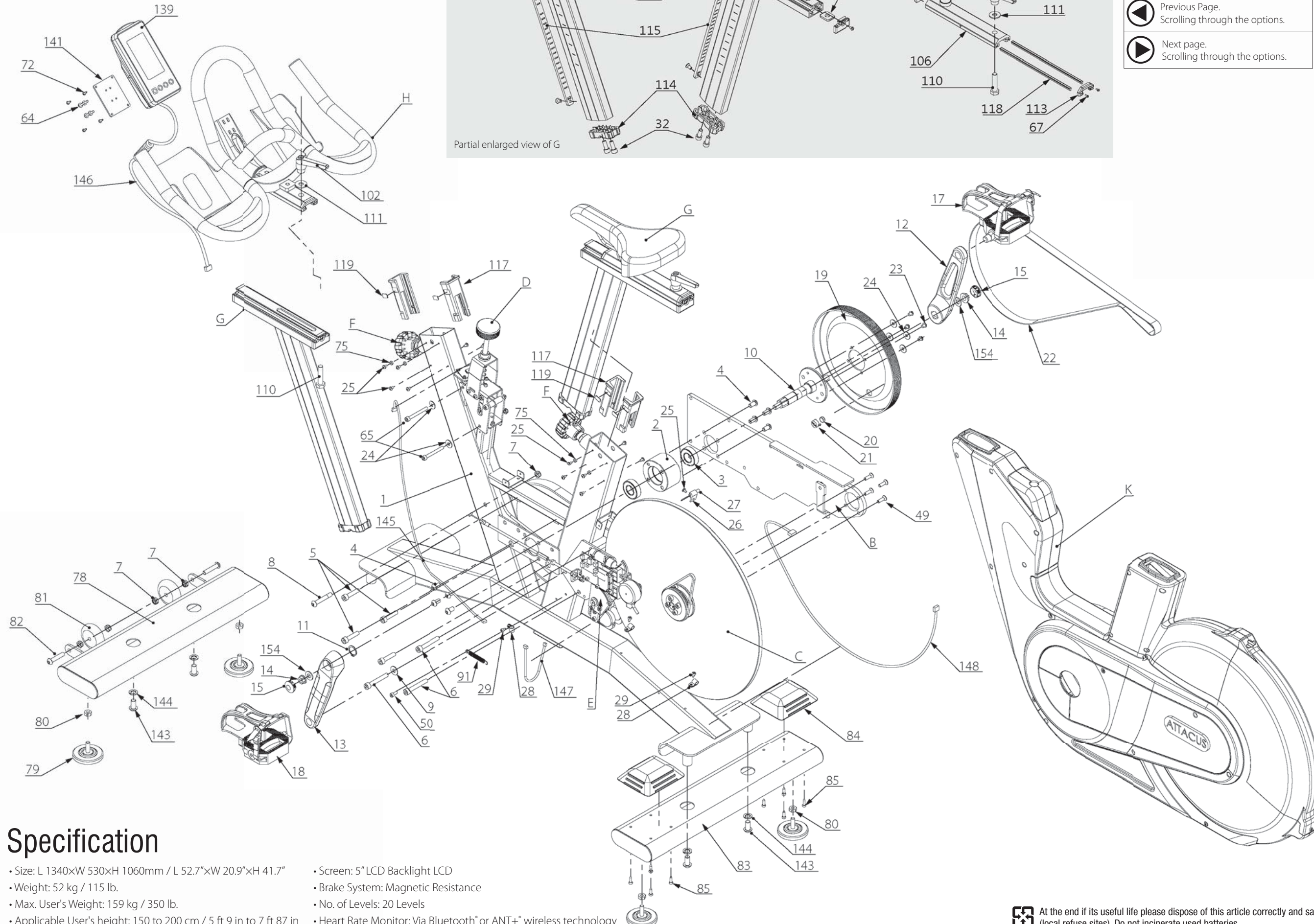
Assembly

! If you have any question or the equipment has any missing parts, please contact your distributor or dial in the customer service number on the maintenance card.
 • The equipment should be assembled by at least 2 persons. Do not attempt to pull up the bike with single arm because it is heavy.

A	B	C	D	E	F	G	H	I	J	K	L	M	N	O
Socket Button Head Cap Screw M10×1.5×20L	Cross Recessed Truss Screws M4×0.7×12L	Phillips Pan Head Screws M3×0.5×10L	Washer Ø25×Ø10×2t	Cable Tie	Open-ended Wrench	6mm Hex Wrench or Allen Key	Console and Mounting Fixed Plate	Front Stabilizer Tube	Rear Stabilizer Tube	Slide Gasket	Quick-Release Knob	Handlebar	Saddle	Pedal
x4	x4	x4	x4	x2	x1	x1	x1	x1	x1	x2	x2	x1	x1	x2



Exploded View



Specification

- Size: L 1340xW 530xH 1060mm / L 52.7"xW 20.9"xH 41.7"
- Weight: 52 kg / 115 lb.
- Max. User's Weight: 159 kg / 350 lb.
- Applicable User's height: 150 to 200 cm / 5 ft 9 in to 7 ft 87 in
- Screen: 5" LCD Backlight LCD
- Brake System: Magnetic Resistance
- No. of Levels: 20 Levels
- Heart Rate Monitor: Via Bluetooth* or ANT+* wireless technology

Buttons

- Press and hold for the Setting Menu. Press for the Display Preference.
- Press and hold to reset.¹ Press to confirm.
- Previous Page. Scrolling through the options.
- Next page. Scrolling through the options.

On-Screen Icon

Status	
	Battery Status ²
	Connectivity to the ANT+ Heart Rate Sensor
	Connectivity to the Bluetooth Heart Rate Sensor
	Connectivity to mobile device (appears when using the app) ³
	HR Zone On
	Watt Zone On
	FTP ON (Watt)
	Connect to Optical HR Watch ⁴
During Sports Mode	
	Page indicator
	Time
	Distance
	Calories
	Resistance Level
	Pedaling Rate
	Speed
	Power
	Heart Rate ⁵
	Target Rate
MAX.	Maximum rate
Avg.	Average rate
MPH	mi/h
KPH	km/h
	Heart Rate Percentage

- Notes
- When the cadence is lower than 60 rpm, the rear indicator will NOT be on. When the cadence is higher than 60 rpm, it should remain consistently bright and is charging properly. If being left idle for 3 months or longer, the battery will be drained and will not function properly.
 - Press and hold at anytime can reset the console display into default settings. Once reset, data in your User's Profile, such as units, gender, age, height, weight, etc. remains unchanged. Other settings will all turn back to default.
 - The icon indicates the console is connecting with the APP or compatible Bluetooth device.
 - When the console is connected with ATTACUS Optical Heart Rate Sports Watch or armbands, you will see this icon followed by the last four digits of the wearable's serial number. Ex. 0001.
 - Heart rate reading will only appear when the console is connected to an external heart rate device.

At the end of its useful life please dispose of this article correctly and safely (local refuse sites). Do not incinerate used batteries.